

ROUNDABOUT

AS PLAYED BY
CHRIS SQUIRE

First staff of music in bass clef, key of D major (one sharp), 4/4 time. It begins with a whole rest, followed by a quarter rest, and then a series of eighth and sixteenth notes with 'x' marks above them, indicating a specific guitar technique.

Second staff of music, continuing the rhythmic pattern of eighth and sixteenth notes with 'x' marks.

Third staff of music, continuing the rhythmic pattern.

VERSE 1

Fourth staff of music, starting the first verse with a similar rhythmic pattern.

Fifth staff of music, continuing the first verse. It features a measure change from 4/4 to 2/4 and back to 4/4.

Sixth staff of music, continuing the first verse with a different rhythmic pattern.

Seventh staff of music, continuing the first verse with the eighth and sixteenth note pattern.

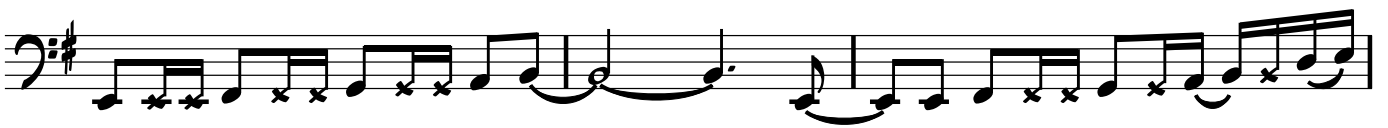
VERSE 2

Eighth staff of music, starting the second verse with a different rhythmic pattern.

Ninth staff of music, continuing the second verse with the eighth and sixteenth note pattern.

Tenth staff of music, continuing the second verse with a different rhythmic pattern.

CHORUS 1



VERSE 3



CHORUS 2



First musical staff in bass clef, key of D major, 4/4 time. It contains a sequence of eighth and quarter notes with rests, including a 2/4 time signature change.

Second musical staff in bass clef, key of D major, 4/4 time. It continues the melodic line with eighth and quarter notes.

Third musical staff in bass clef, key of D major, 4/4 time. It features a more complex melodic line with eighth notes and some beamed sixteenth notes.

Fourth musical staff in bass clef, key of D major, 4/4 time. It shows a melodic phrase with a long note followed by a series of eighth notes.

BRIDGE

1. - 11.

Fifth musical staff in bass clef, key of D major, 4/4 time. It begins with a repeat sign and contains a melodic line for measures 1 through 11.

12.

RUBATO BRIDGE (OPEN)

VOCALS IN

Sixth musical staff in bass clef, key of D major, 4/4 time. It starts with a melodic line for measure 12, followed by a section of whole rests labeled 'RUBATO BRIDGE (OPEN)' and 'VOCALS IN'.

Seventh musical staff in bass clef, key of D major, 4/4 time. It begins with a whole rest, followed by a melodic line that includes a trill (tr) and a 2/4 time signature change.

ORGAN SOLO 1

Eighth musical staff in bass clef, key of D major, 4/4 time. It starts with a whole rest, followed by a melodic line for the organ solo.

Ninth musical staff in bass clef, key of D major, 4/4 time. It continues the organ solo with eighth and quarter notes.

Tenth musical staff in bass clef, key of D major, 4/4 time. It continues the organ solo with eighth and quarter notes.

Eleventh musical staff in bass clef, key of D major, 4/4 time. It concludes the organ solo with eighth and quarter notes.

GUITAR SOLO 1

Musical notation for Guitar Solo 1, consisting of two staves of music in 4/4 time with a key signature of one sharp (F#). The first staff includes a repeat sign and a 'x3' multiplier. The second staff concludes the solo with a final note.

ORGAN SOLO 2

Musical notation for Organ Solo 2, consisting of two staves of music in 4/4 time with a key signature of one sharp (F#). The notation includes various rhythmic patterns and rests.

GUITAR SOLO 2

Musical notation for Guitar Solo 2, consisting of three staves of music in 4/4 time with a key signature of one sharp (F#). The first staff includes a repeat sign and a 'x3' multiplier. The second staff features a melodic line with a slur. The third staff concludes with a final note.

VERSE 4

Musical notation for Verse 4, consisting of three staves of music in 4/4 time with a key signature of one sharp (F#). The notation includes rhythmic patterns with 'x' marks and various time signature changes (2/4 and 4/4).

CHORUS 3

Musical notation for Chorus 3, consisting of one staff of music in 4/4 time with a key signature of one sharp (F#). The notation includes rhythmic patterns and time signature changes (2/4 and 4/4).

